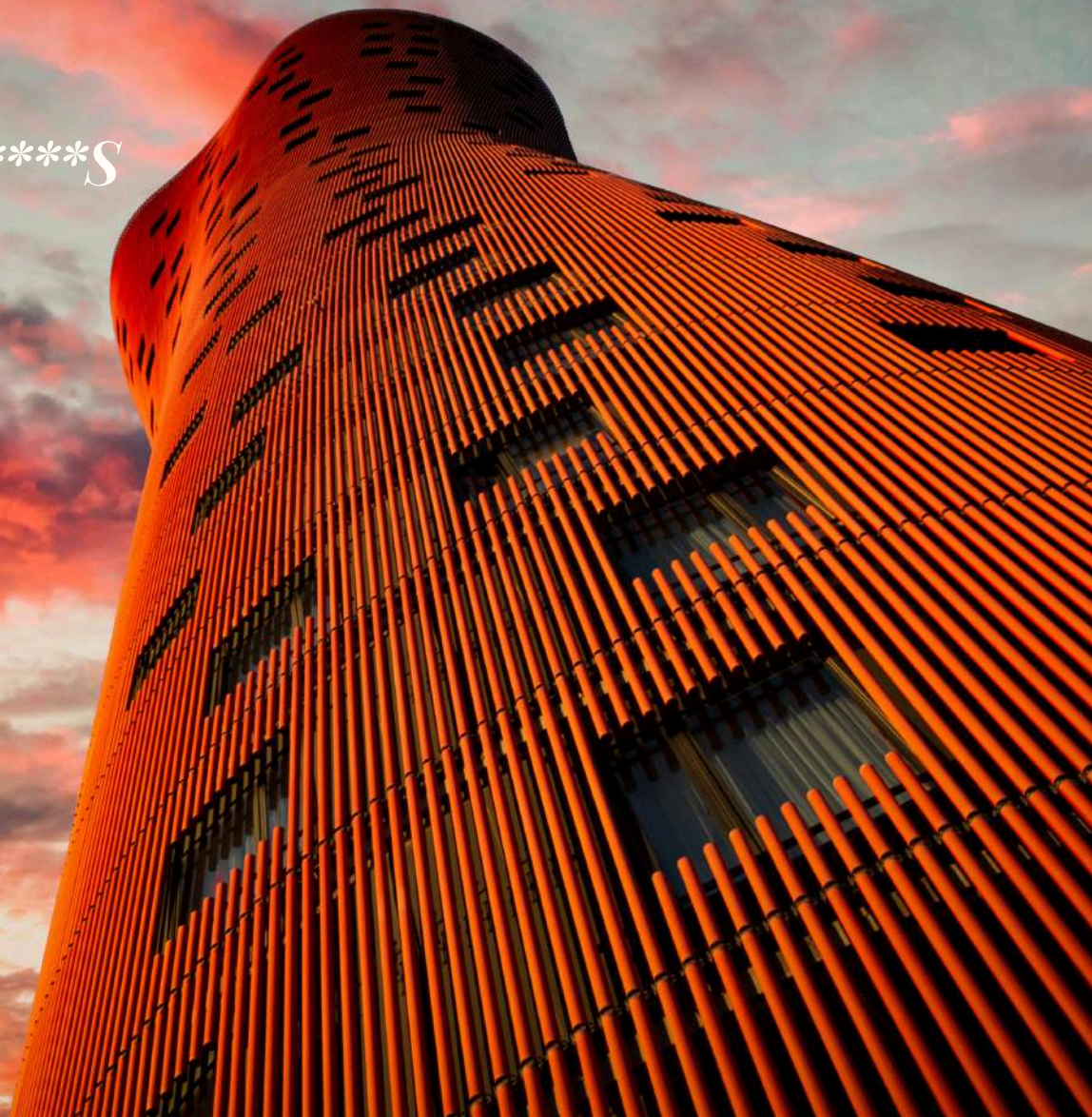


Hotel
*Porta Fira****S*



FROM THE HEIGHTS:
UNIQUE DESIGN IN BARCELONA

PORTA FIRA
★★★★S
Hoteles Santos

*Hotel Porta Fira****S*

Hotel Santos Porta Fira, inaugurated in 2010, is located in one of the most developed areas of Barcelona, in L'Hospitalet, in front of the Fira Gran Vía, with excellent access to the city centre and El Prat Airport.

The establishment of Hoteles Santos is a remarkable allure for the business world, with **321 rooms** and suites, fully equipped with the latest technology, as well as an executive floor, restaurant, gym and multiple **meeting rooms**, including a versatile **800-square-meter** grand hall with a 5-meter-high ceiling and partitionable walls, for any type of event.

The Hotel Porta Fira is the **work of the prestigious Japanese architect Toyo Ito**, renowned for authoring, among others, the extension of the Fira of Barcelona, as well as being an international architectural award-winning designer.

This modern, state-of-the-art **24-storey building** reaches a height of **110 meters** and is already recognised as one of the most iconic buildings of the city and already a memorable part of the Barcelona Skyline.



Meeting rooms

The meeting rooms of the Hotel Porta Fira offer magnificent spaces to satisfy all the needs of our clients.

A total meeting room surface of more than 2.600 m² featuring adaptable venues from 32 m² to 780 m² to suit all types of event for which Porta Fira will be the perfect setting.

All the meeting rooms are stocked with the necessary equipment, whatever the event may be. And we also guarantee the success of your event with our top-notch staff.



Index

Ground floor:

- Arenas I
 - Arenas II
 - Arenas III
 - Arenas IV
- Modular rooms

Atrium floor:

- Nelva
- Saray
- Santemar
- Praga
- Maydrit
- Diagonal
- Agumar

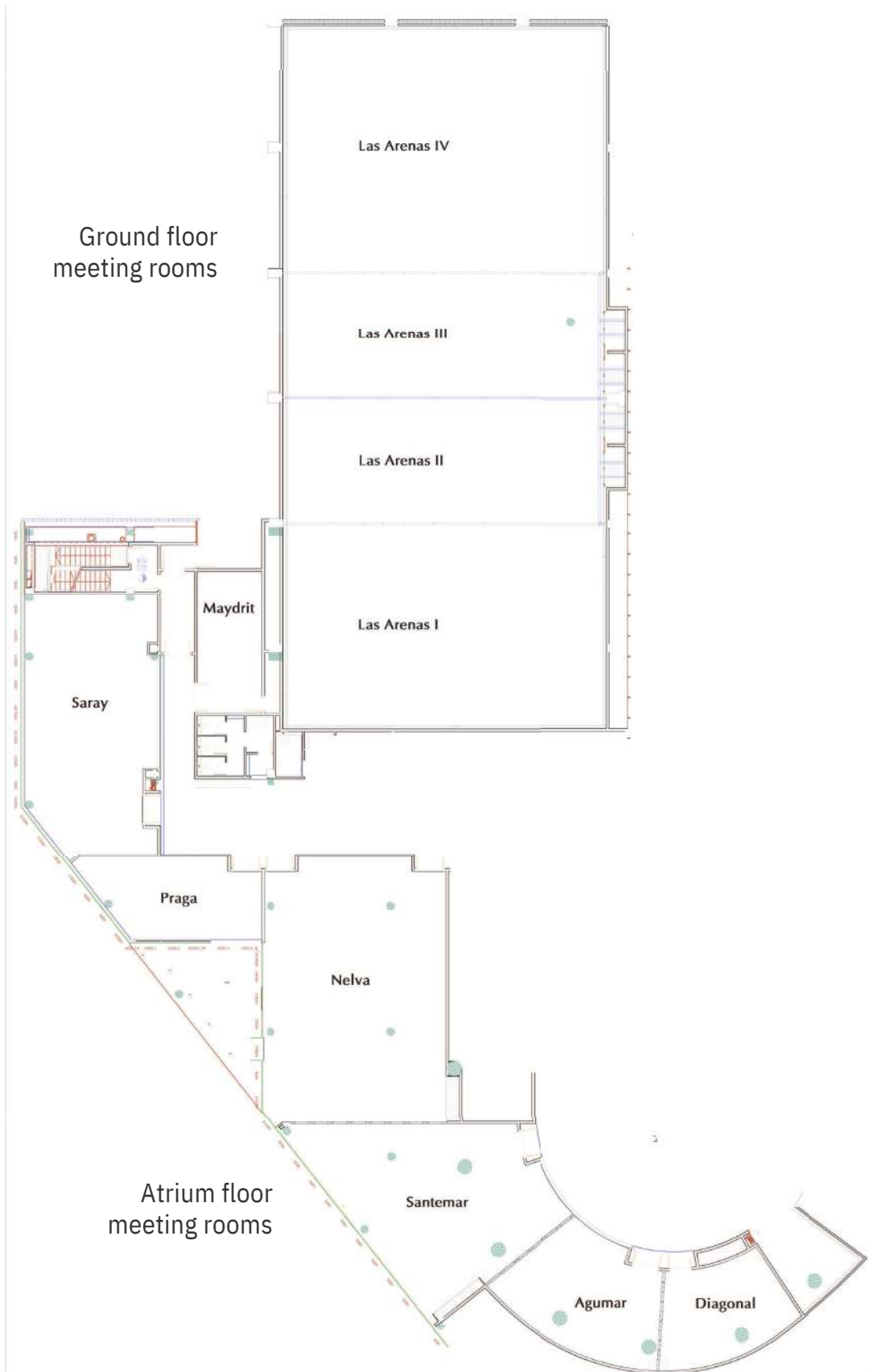
First floor:

- Nixe I
- Nixe II
- Nixe I + II
- Terraza

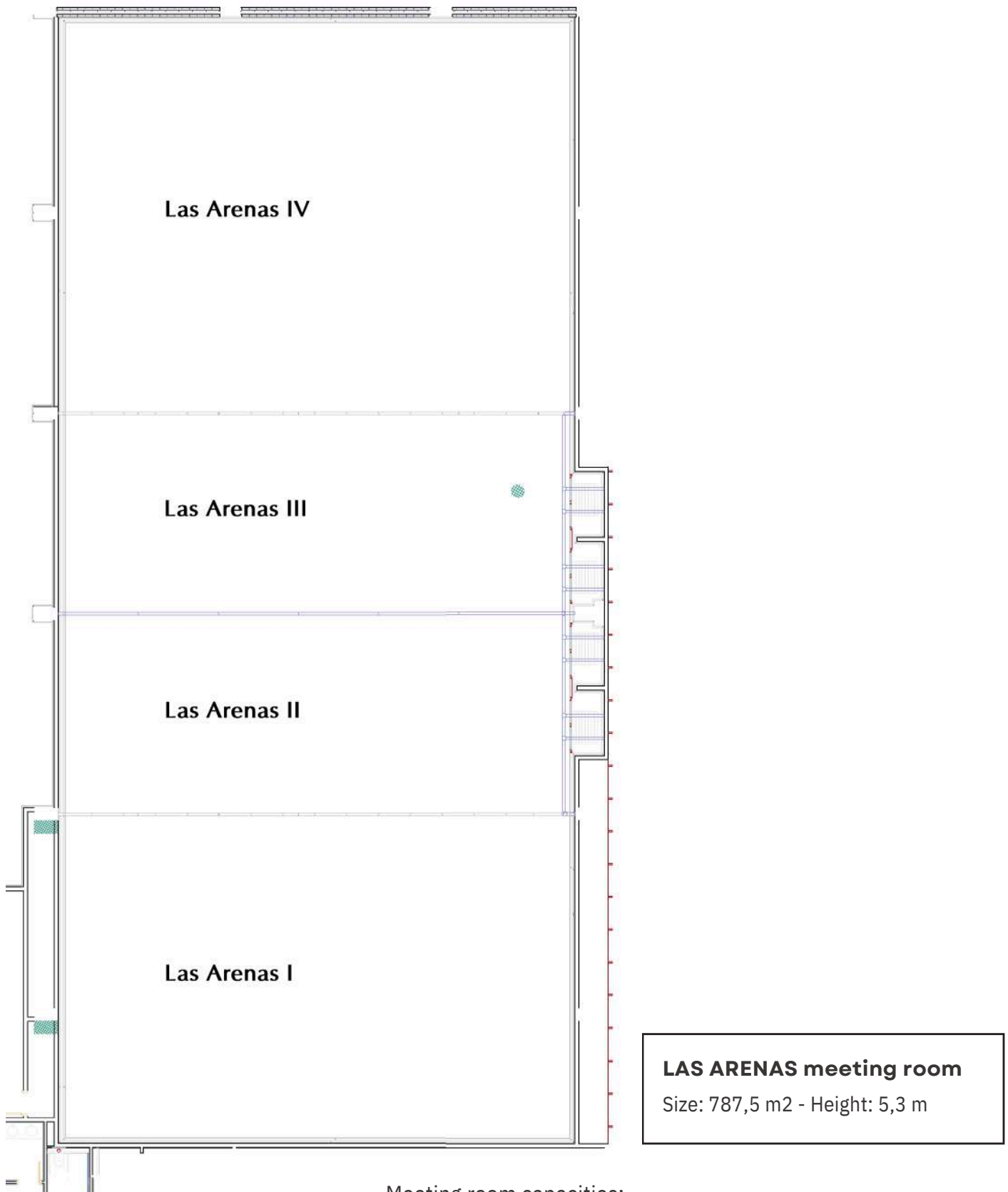
Second floor:

- Tibidabo
- Montjuic
- Mediterrani
- El Prat
- Europas
- Llobregat
- Marina
- Ordal
- Morella

Hotel Porta Fira****S meeting rooms



*Hotel Porta Fira****S meeting rooms*



Meeting room capacities:

	Cocktail	School	Teathre	Imperial	U	Banquet	Cabaret
Las Arenas I	220	135	220	51	51	180	90
Las Arenas II	115	75	110	40	40	90	56
Las Arenas III	115	75	110	40	40	90	56
Las Arenas IV	250	162	240	56	56	200	120
LAS ARENAS	700	447	680	-	-	560	322



LAS ARENAS I meeting room

Size: 229 m2 - Height: 5,3 m



LAS ARENAS II meeting room

Size: 137,5 m2 - Height: 5,3 m



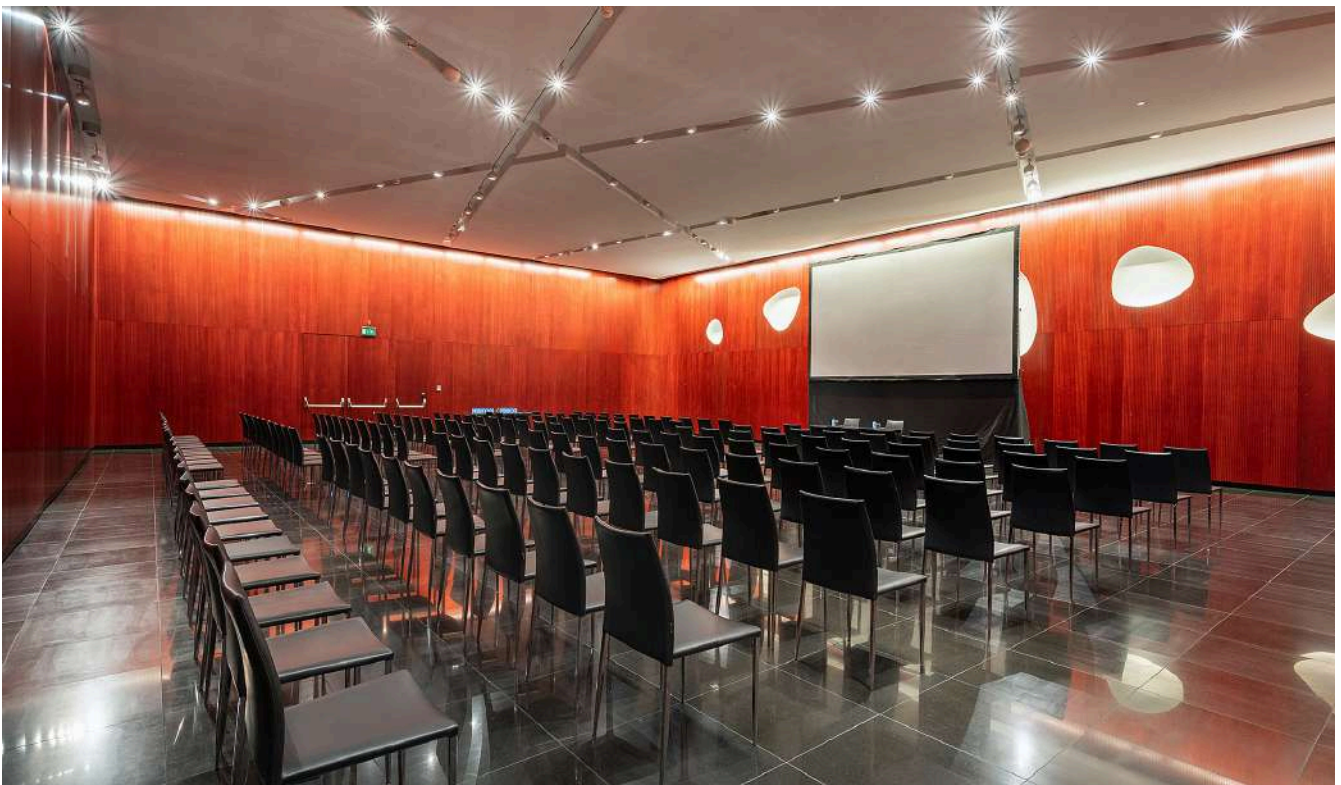
LAS ARENAS III meeting room

Size: 137,5 m2 - Height: 5,3 m



LAS ARENAS IV meeting room

Size: 275 m2 - Height: 5,3 m





Arenas I + II rooms



Arenas III + IV rooms



Nelva meeting room

Size: 172 m2 - Height: 3,2 m

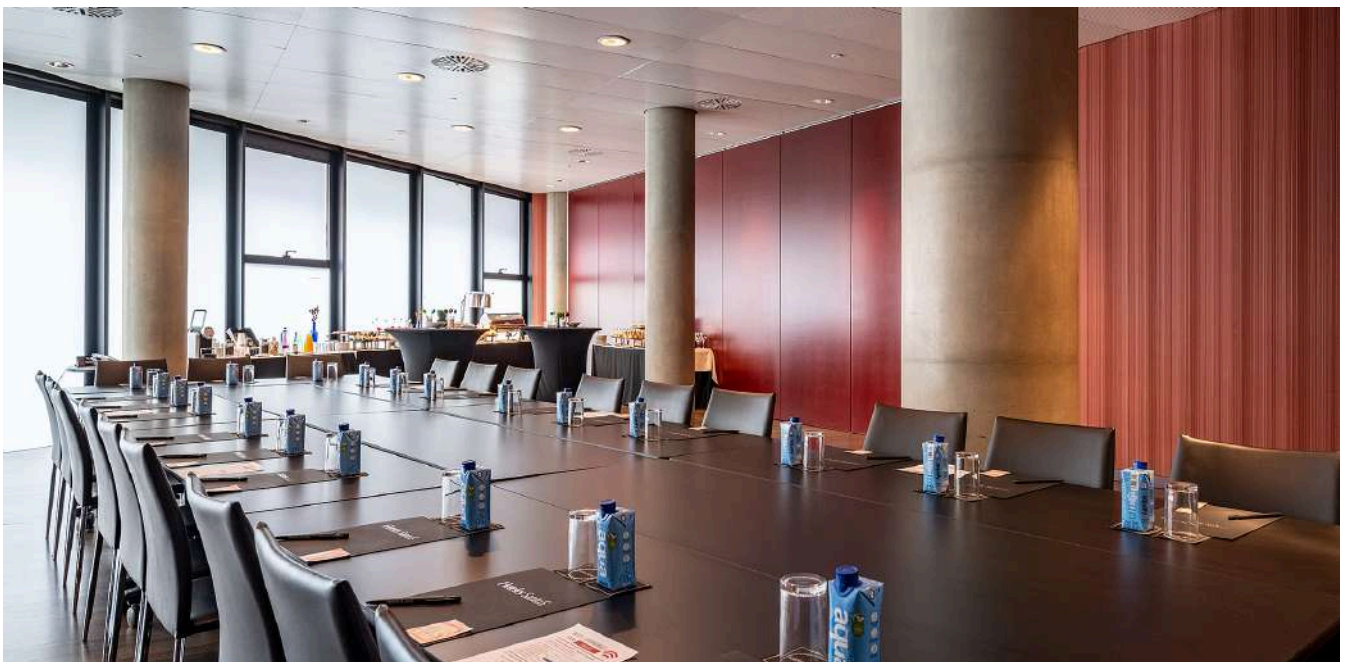


Meeting room capacities:

Cocktail	School	Theatre	Imperial	U	Banquet	Cabaret
140	75	110	42	42	120	56

SANTEMAR meeting room

Size: 117 m2 - Height: 3,2 m



Meeting room capacities:

Cocktail	School	Theatre	Imperial	U	Banquet	Cabaret
70	33	58	21	21	50	28

SARAY meeting room

Size: 119 m2 - Height: 3,2 m



Meeting room capacities:

Cocktail	School	Theatre	Imperial	U	Banquet	Cabaret
100	48	90	36	36	80	35

PRAGA meeting room

Size: 48 m2 - Height: 3,2 m



Meeting room capacities:

Cocktail	School	Theatre	Imperial	U
30	23	35	15	15

AGUMAR meeting room

Size: 59 m2 - Height: 3,2 m



Meeting room capacities:

Cocktail	Theatre	Imperial/U	School
30	47	15	24

Diagonal meeting room

Size: 37 m2 - Height: 3,2 m



Meeting room capacities:

Cocktail	Theatre	Imperial/U	School
30	25	15	9

Maydrit meeting room

Size: 32 m2 - Height: 3,2 m



Meeting room capacities:

Cocktail	Theatre	Imperial/U	School
30	20	15	9

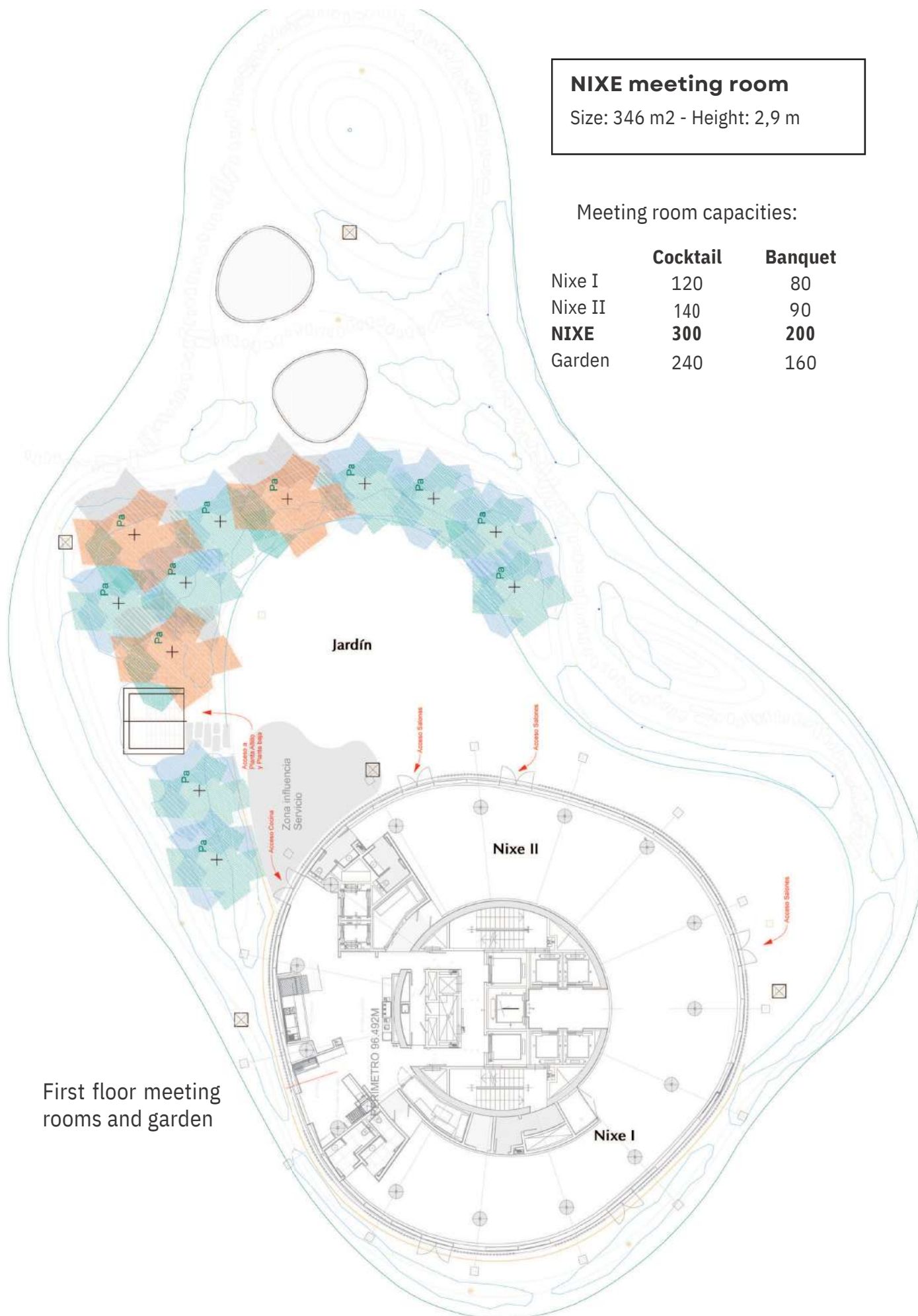
Hotel Porta Fira****S meeting rooms

NIXE meeting room

Size: 346 m² - Height: 2,9 m

Meeting room capacities:

	Cocktail	Banquet
Nixe I	120	80
Nixe II	140	90
NIXE	300	200
Garden	240	160



First floor meeting rooms and garden

NIXE I meeting room

Size: 145 m2 - Height: 2,9 m



NIXE II meeting room

Size: 152 m2 - Height: 2,9 m



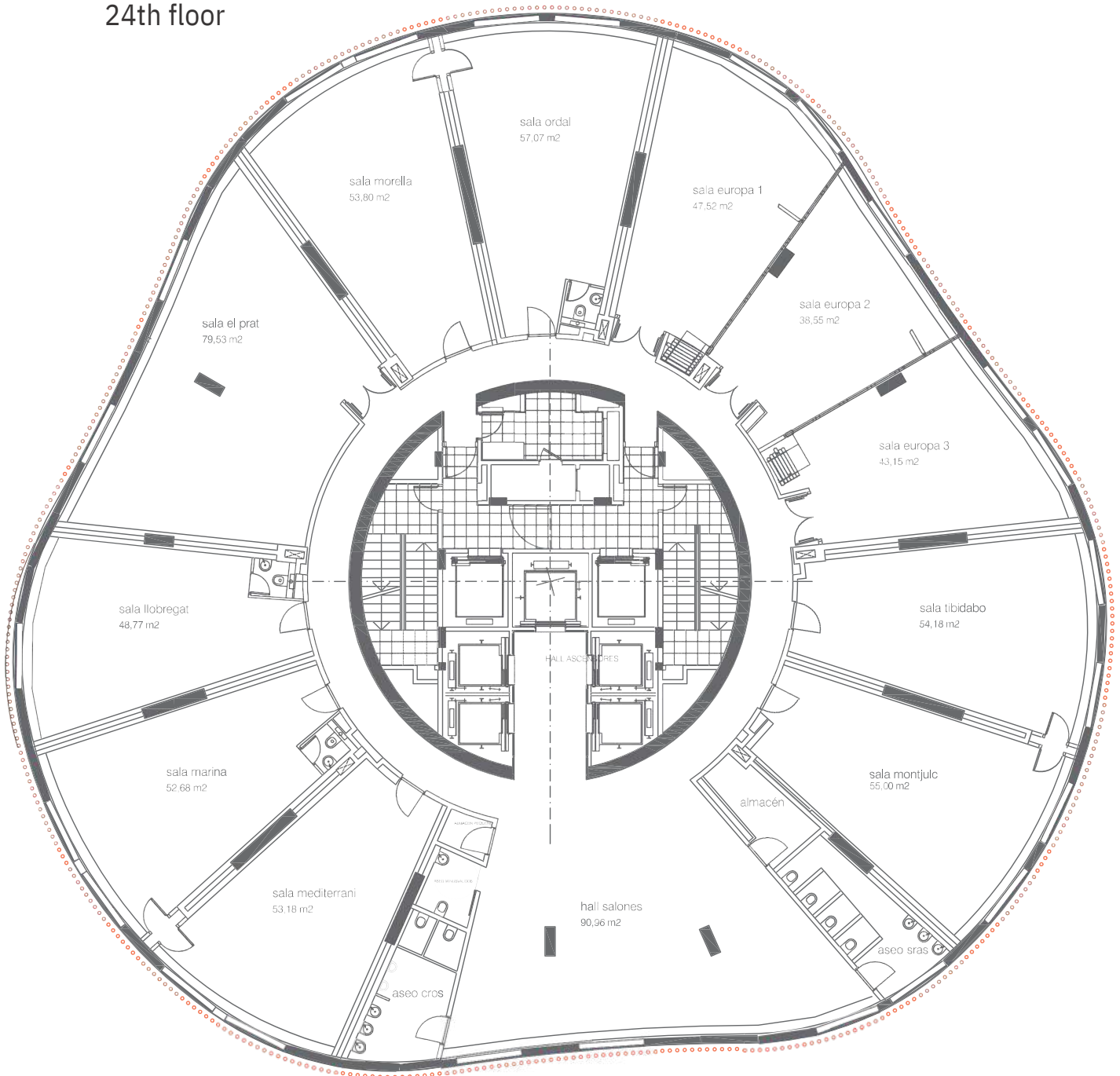
GARDEN

Size: 340 m2



Hotel Porta Fira****S meeting rooms

Meeting rooms 24th floor



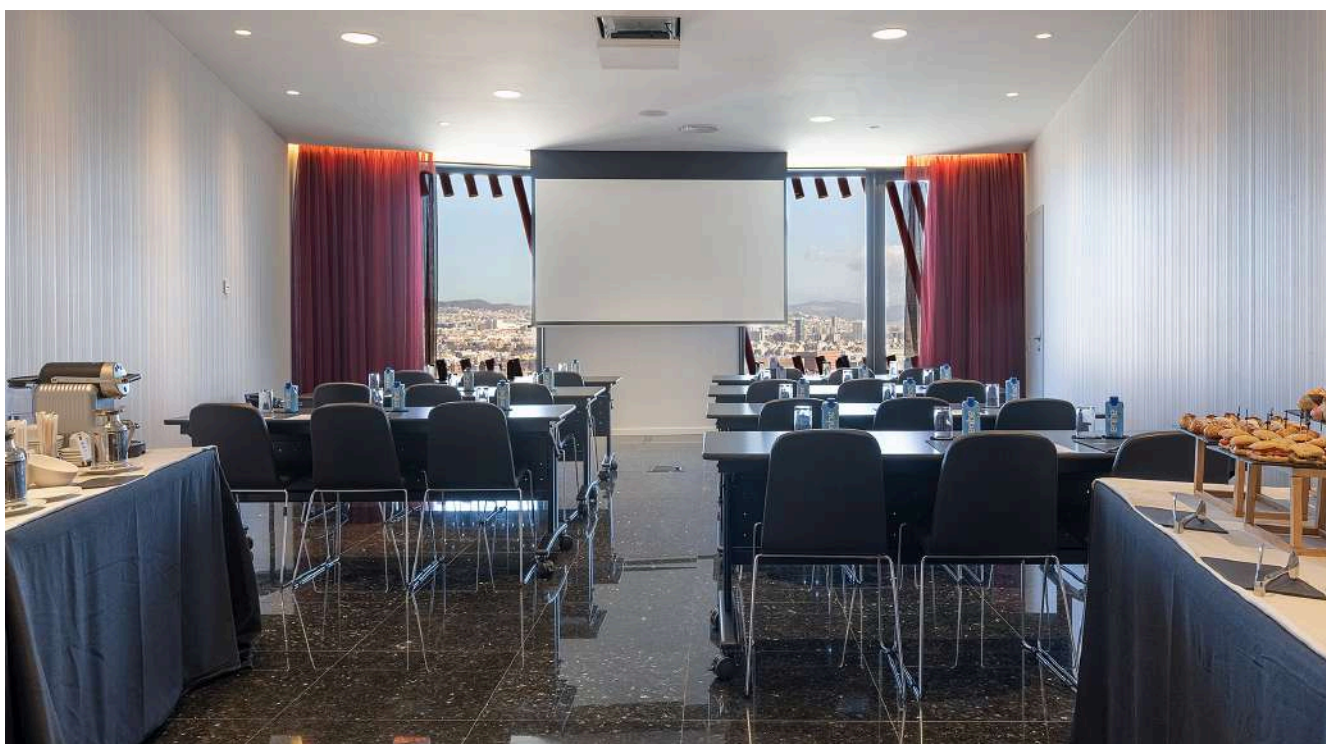
Mediterrani room

Size: 53 m2 - Hight: 2,8 m



Marina room

Size: 52 m2 - Height: 2,8 m



Meeting room capacities:

	School	Theatre	Imperial	U	Cabaret
Mediterrani	18	30	15	15	14
Marina	18	30	15	15	14

Llobregat room

Size: 48 m2 - Height: 2,8 m



Meeting room capacities:

School	Theatre	Imperial	U	Cabaret
18	30	15	15	14

El Prat room

Size: 79 m2 - Height: 2,8 m



Meeting room capacities:

School	Theatre	Imperial	U	Cabaret
36	45	15	15	21

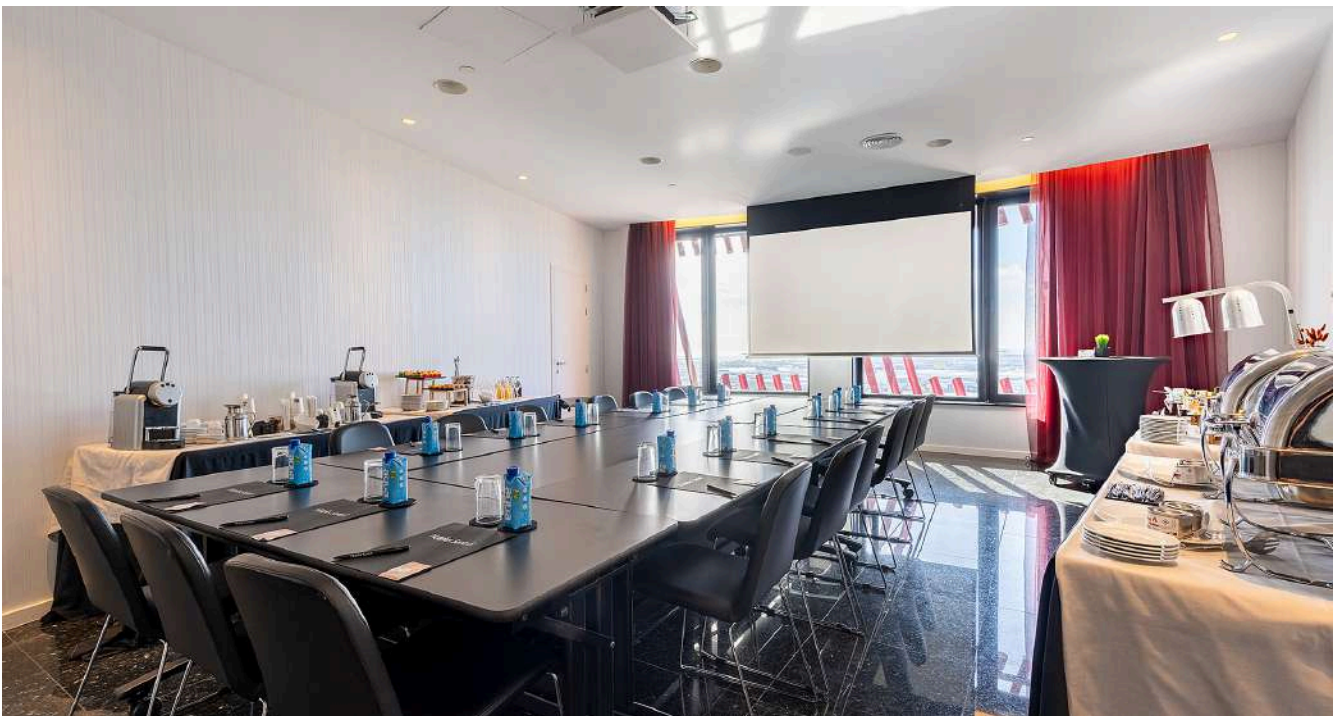
Morella room

Size: 53 m2 - Height: 2,8 m



Ordal room

Size: 57 m2 - Height: 2,8 m



Meeting room capacities:

	School	Theatre	Imperial	U	Cabaret
La Morella	21	34	21	21	14
Ordal	18	35	15	15	14

Europa I room

Size: 47 m2 - Height: 2,8 m

Europa II room

Size: 38 m2 - Height: 2,8 m

Europa III room

Size: 43 m2 - Height: 2,8 m



Meeting room capacities:

	School	Theatre	Imperial	U	Cabaret
Europa I	18	26	15	15	14
Europa II	18	24	15	15	14
Europa III	18	24	15	15	14
Europa II + III	36	49			
Europa I + II	36	49			

Tibidabo room

Size: 54 m2 - Height: 2,8 m



Montjuic room

Size: 55 m2 - Height: 2,8 m



Meeting room capacities:

	School	Theatre	Imperial	U	Cabaret
Tibidabo	21	30	21	21	14
Montjuic	21	30	21	21	14

Hotel Porta Fira****S meeting rooms

Summary table of room sizes and capacities

ATRIUM + ARENAS FLOOR

Meeting rooms	sqm	Height	Broad	Length	School	Theatre	Cocktail	U	Banquet	Imperial	Cabaret Mesas 7 pax.	Buffet
Maydrit	31	3,2	3,75	8,18	9	20	30	15	20	15	14	20
Diagonal	37	3,2			9	25	30	15	20	15	14	20
Praga	46	3,2	4,87	9,15	23	35	30	15	20	15	14	10
Agumar	59	3,2	6,93	8,86	24	47	30	15	20	15	14	20
Santemar	117	3,2	10,16	10,92	33	58	70	21	50	21	28	40
Saray	102	3,2	8,12	12,53	48	90	100	36	80	36	35	70
Nelva	173	3,2	10,92	15,84	75	110	140	42	120	42	56	100
Las Arenas I	229	5	12,2	18,8	135	220	220	51	180	51	90	130
Las Arenas II	141	5	7,5	18,8	75	110	115	40	90	40	56	70
Las Arenas III	141	5	7,5	18,8	75	110	115	40	90	40	56	70
Las Arenas IV	275	5	14,6	18,8	162	240	250	56	200	56	120	150
Las Arenas I + II	358	5	19,7	18,18	210	330	335	91	270	91	146	200
Las Arenas III + IV	401	5	22,1	18,18	237	350	365	96	290	96	176	220
Las Arenas	786	5	41,8	18,8	447	680	700	-	560	-	322	520
Foyer Arenas	348	5	7,85	44,39			300		240			200
Nixe Palace I	145	2,9			-	30	120	-	80	-	25	60
Nixe Palace II	152	2,9			50	70	140	-	90	-	35	70
Nixe Palace	346	2,9			-	-	300	-	200	-	-	200
Jardín	340				-	-	260	-	160	-	0	140

MEETING ROOMS CAPACITIES 24 FLOOR

Meeting rooms	sqm	Height	School	Theatre	Cocktail	Banquet	Buffet	U	Imperial	Cabaret Mesas 7 pax.
Mediterrani	53	2,8	18	30	30	20	-	15	15	14
Marina	52	2,8	18	30	30	20	-	15	15	14
Llobregat	48	2,8	18	30	20	20	-	15	15	14
El Prat	79	2,8	36	45	40	40	-	15	15	21
Morella	53	2,8	21	34	30	20	-	21	21	14
Ordal	57	2,8	18	35	20	20	-	15	15	14
Europa	128	2,8	54	74	65	60	70	-	-	42
Europa I	47	2,8	18	26	20	20	-	15	15	14
Europa II	38	2,8	18	24	20	20	-	15	15	14
Europa III	43	2,8	18	24	20	20	-	15	15	14
Europa I+II	85	2,8	36	49	40	40	40	15	15	28
Europa II+III	81	2,8	36	49	40	40	40	15	15	28
Tibidabo	54	2,8	21	30	20	20	-	21	21	14
Montjuic	55	2,8	21	30	20	20	-	21	21	14